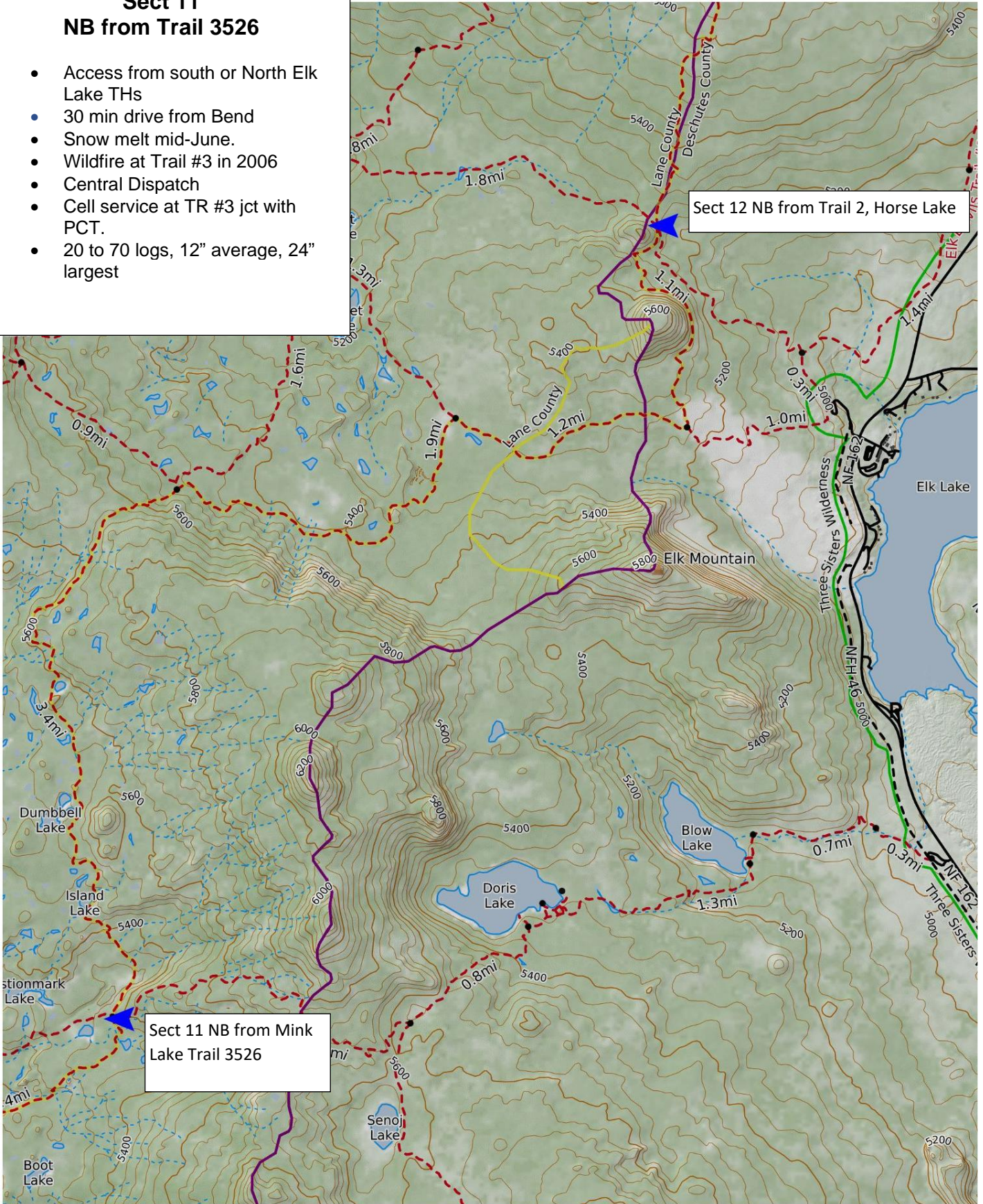


**Sect 11  
NB from Trail 3526**

- Access from south or North Elk Lake THs
- 30 min drive from Bend
- Snow melt mid-June.
- Wildfire at Trail #3 in 2006
- Central Dispatch
- Cell service at TR #3 jct with PCT.
- 20 to 70 logs, 12" average, 24" largest

Sect 12 NB from Trail 2, Horse Lake

Sect 11 NB from Mink Lake Trail 3526



Mercator Projection  
WGS84  
USNG Zone 10TEP  
 CALTOPO

