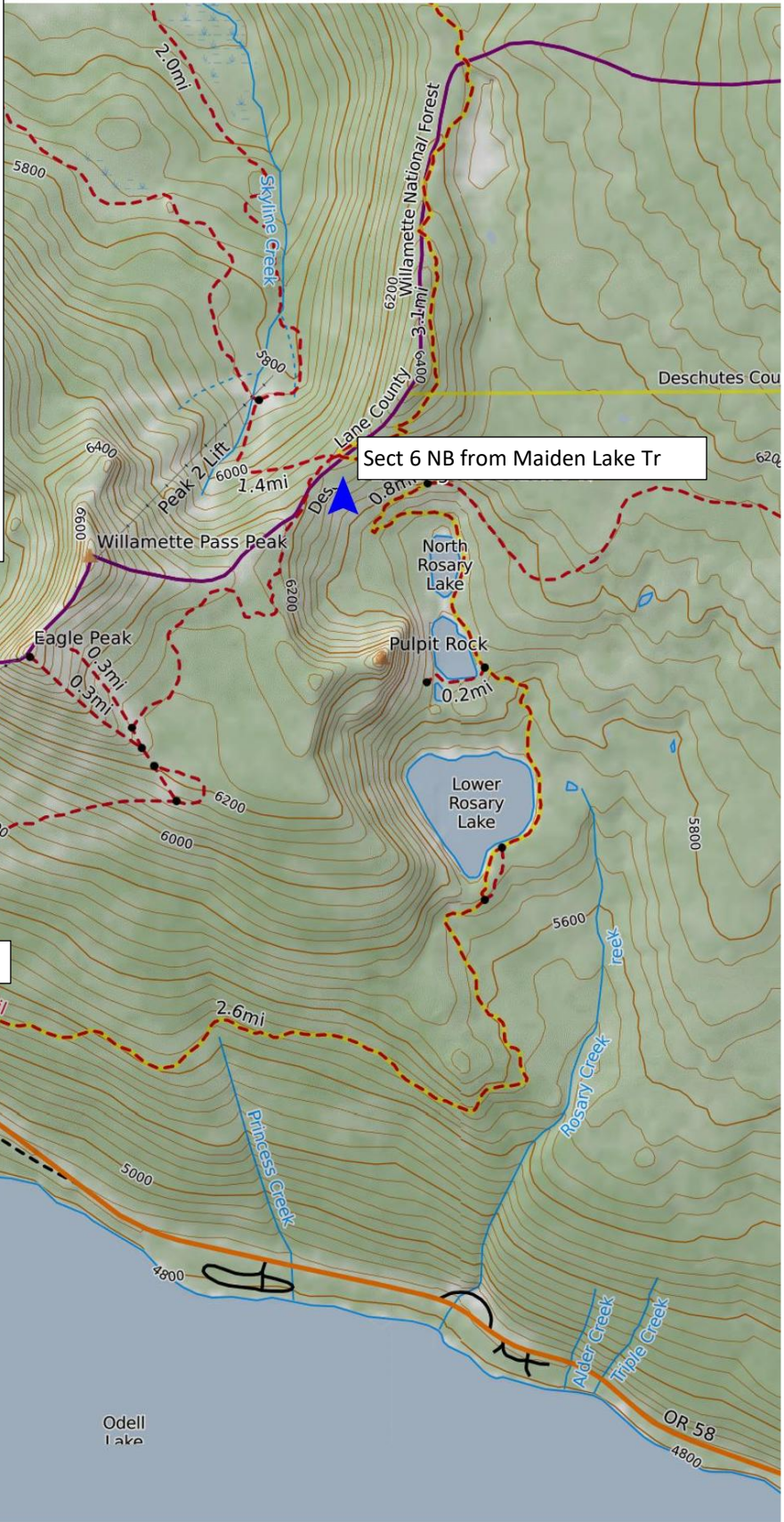


Sect.5 - 4.2 Miles NB from Hwy. 58

- Non-wilderness
- TH-Hwy 58-1 mile east of Pass at ODOT sanding shed
- 1:15 drive from Eugene
- Scouting early June, logout late June
- No recent wildfire history
- no communication dead zones
- Verizon cell service 1st 2 miles
- Eugene or Central Oregon dispatch ok
- 10 logs cleared on average—average size log-12"—largest cleared -42"
- Heli. landing zone-Ski area lot



Sect 5 NB from Hwy 58

Sect 6 NB from Maiden Lake Tr

Mercator Projection
WGS84
USNG Zone 10TEP
CalTopo

