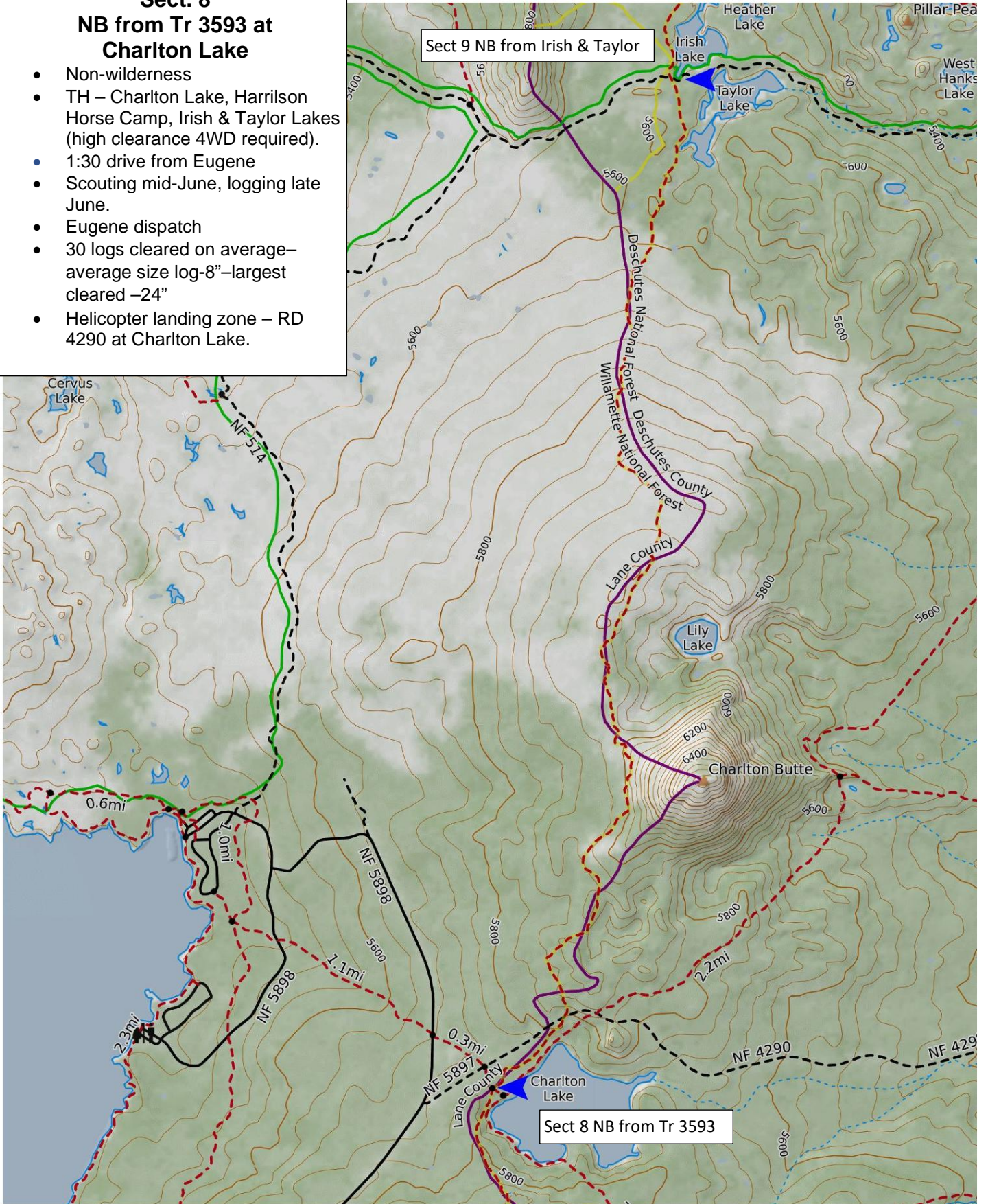


Sect. 8 NB from Tr 3593 at Charlton Lake

- Non-wilderness
- TH – Charlton Lake, Harrilson Horse Camp, Irish & Taylor Lakes (high clearance 4WD required).
- 1:30 drive from Eugene
- Scouting mid-June, logging late June.
- Eugene dispatch
- 30 logs cleared on average—average size log-8"—largest cleared –24"
- Helicopter landing zone – RD 4290 at Charlton Lake.

Sect 9 NB from Irish & Taylor

Sect 8 NB from Tr 3593



Mercator Projection
WGS84
USNG Zone 10TEP

