

# MID-OREGON PCT STEWARDS



“NB” = northbound from

**SECTION 24: Beth Dayton, Salamanders**  
NB from TR 3440N N of Pamela Lake

**SECTION 23: John Williams**  
NB from Cathedral Rock Trail TR 3430/3440 S

**SECTION 21: Pete Tucker** NB from Minto Pass TR 3437 to Wasco Lake

**SECTION 20A: Ginny & Jim Elliot**  
NB from Jefferson Wilderness

**SECTION 19: Cristina Risa & Donna Zimmerer**  
NB from North Boundary of Mt. Washington Wilderness

**SECTION 18: Bill Carpenter & Tom Brauner**  
NB from N edge Belknap Lava Flow

**SECTION 17: Mindy Williams \*SIT**  
NB from Lava Camp Lake Trail Junction

**SECTION 13: John Merrifield**  
NB from TR 12.1

**SECTION 12: Jodi Knutson Mid Valley Chapter OET**  
NB from TR 2 Horse Lake Trail

**SECTION 9: Open**  
NB from Irish & Taylor Lakes

**SECTIONS 6 & 7: Ed Willson Waldo Ultras**

**SECTION 5: Ed Willson Waldo Ultras**  
NB from Hwy. 58

**SECTION 4: Becky & Matt Hope Emerald BCHO**  
NB from Divide Lake Trail

**SECTION 2: Aaron Nicholson**  
NB from Cairn above Windy Lakes

**SECTION 1: Jon & Rhonda Hjort**  
NB from Windigo Pass

**SECTION 26: Arden Corey, BCH**  
NB from Forest Boundary Park Ridge End @ Breitenbush Lake

**SECTION 25: Stacey Lee**  
NB from Russell Creek

**SECTION 22: Paul Schmiesing**  
NB from Swallow Lake Trail TR 3488/4003.1

**SECTION 20B: OPEN**  
Porcupine Rock to Minto Pass

**SECTION 16: Jackie Konen**  
NB from Scott Trail

**SECTION 15: Cat Addison**  
NB from Obsidian Trail 3528

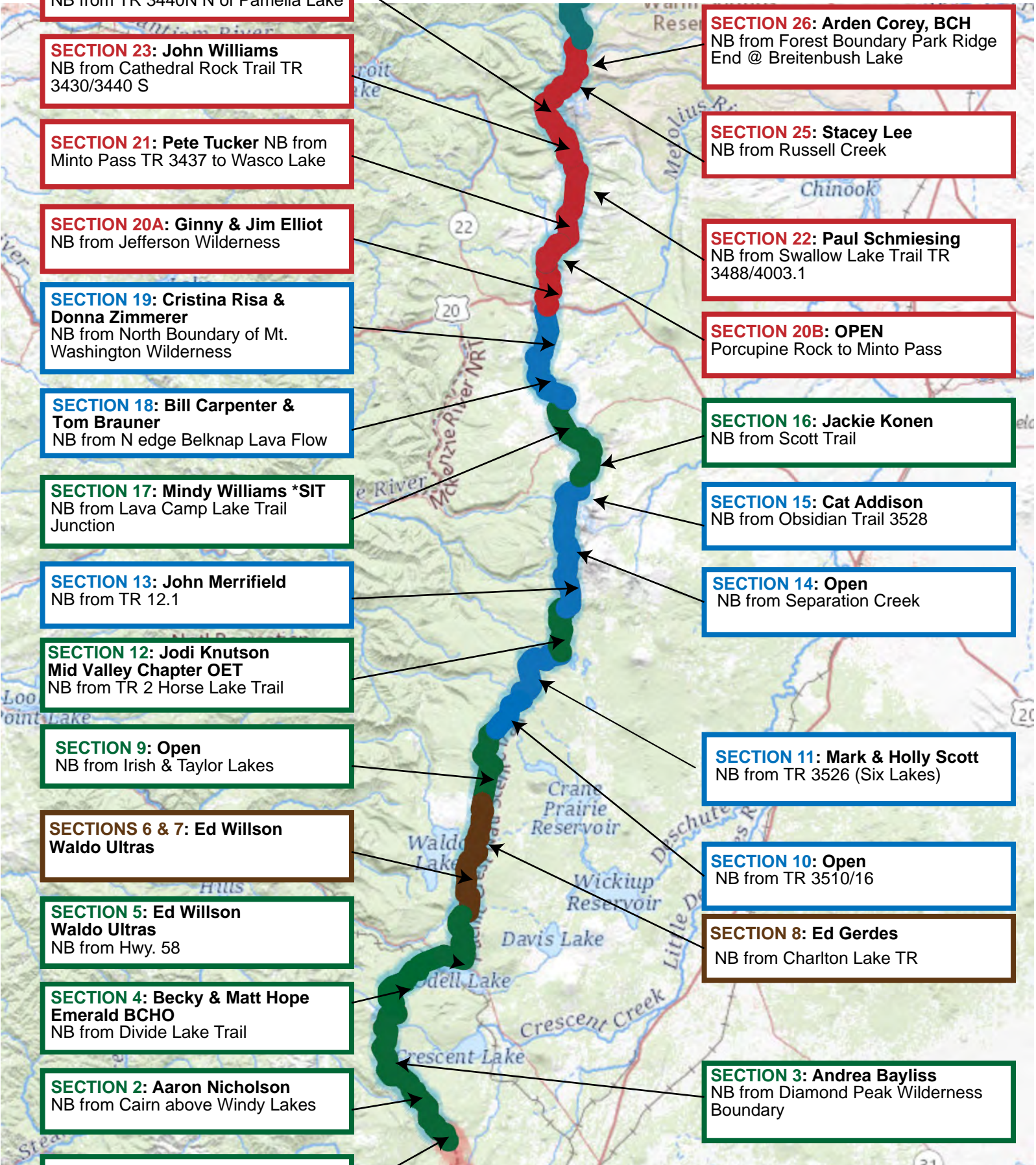
**SECTION 14: Open**  
NB from Separation Creek

**SECTION 11: Mark & Holly Scott**  
NB from TR 3526 (Six Lakes)

**SECTION 10: Open**  
NB from TR 3510/16

**SECTION 8: Ed Gerdes**  
NB from Charlton Lake TR

**SECTION 3: Andrea Bayliss**  
NB from Diamond Peak Wilderness Boundary



# AGENCY CONTACTS

## Color Code Legend



### DESCHUTES NATIONAL FOREST

All Ranger Districts                      Contacts:  
Jessica Larson, [jessica.larson@usda.gov](mailto:jessica.larson@usda.gov)  
(541) 419-7943  
Justin Ewer, [justin.ewer@usda.gov](mailto:justin.ewer@usda.gov)  
(509) 395-3390  
Joe Welke, [joseph.welke@usda.gov](mailto:joseph.welke@usda.gov)  
(541) 383-4040  
Jason Fisher, [jason.r.fisher@usda.gov](mailto:jason.r.fisher@usda.gov)  
541-480-6423

### MIDDLE FORK RANGER DISTRICT

Willamette National Forest  
Contact:  
Kevin Rowell  
(541) 782-5305    [kevin.a.rowell@usda.gov](mailto:kevin.a.rowell@usda.gov)

### MCKENZIE RIVER RANGER DISTRICT

Contact:  
Dylan McCoy  
[dylan.mccoy@usda.gov](mailto:dylan.mccoy@usda.gov)  
(541) 822-7239

### DETROIT RANGER DISTRICT

Willamette National Forest  
Contacts:  
Brandon Haraughty    (503) 983-1507  
[brandon.haraughty@usda.gov](mailto:brandon.haraughty@usda.gov)  
Eric Gjonnes    (503) 854-3894  
[eric.gjonnes@usda.gov](mailto:eric.gjonnes@usda.gov)