

MID-OREGON PCT STEWARDS



SECTION 24: Beth Dayton, Salamanders MAP
NB from TR 3440N N of Pamela Lake

SECTION 23: John Williams MAP
NB from Cathedral Rock Trail TR 3430/3440 S

SECTION 21: Pete Tucker NB from Minto Pass TR 3437 to Wasco Lake

SECTION 20A: Ginny & Jim Elliot
NB from Jefferson Wilderness

SECTION 19: Cristina Risa & Donna Zimmerer
NB from North Boundary of Mt. Washington Wilderness

SECTION 18: Bill Carpenter & Tom Brauner
NB from N edge Belknap Lava Flow

SECTION 17: Mindy Williams *SIT
NB from Lava Camp Lake Trail Junction

SECTION 13: John Merrifield
NB from TR 12.1

SECTION 12: Jodi Knutson Mid Valley Chapter OET
NB from TR 2 Horse Lake Trail

SECTION 9: Open
NB from Irish & Taylor Lakes

SECTIONS 6 & 7: Ed Willson Waldo Ultras

SECTION 5: Ed Willson Waldo Ultras
NB from Hwy. 58

SECTION 4: Becky & Matt Hope Emerald BCHO
NB from Divide Lake Trail

SECTION 2: Aaron Nicholson
NB from Cairn above Windy Lakes

SECTION 1: Jon & Rhonda Hjort
NB from Windigo Pass

“NB” = northbound from

SECTION 26: Arden Corey, BCH
NB from Forest Boundary Park Ridge End @ Breitenbush Lake

SECTION 25: Stacey Lee NB
from Russell Creek

SECTION 22: Paul Schmiesing
NB from Swallow Lake Trail TR 3488/4003.1

SECTION 20B: Bri Leahy
NB from Porcupine Rock

SECTION 16: Jackie Konen
NB from Scott Trail

SECTION 15: Cat Addison
NB from Obsidian Trail 3528

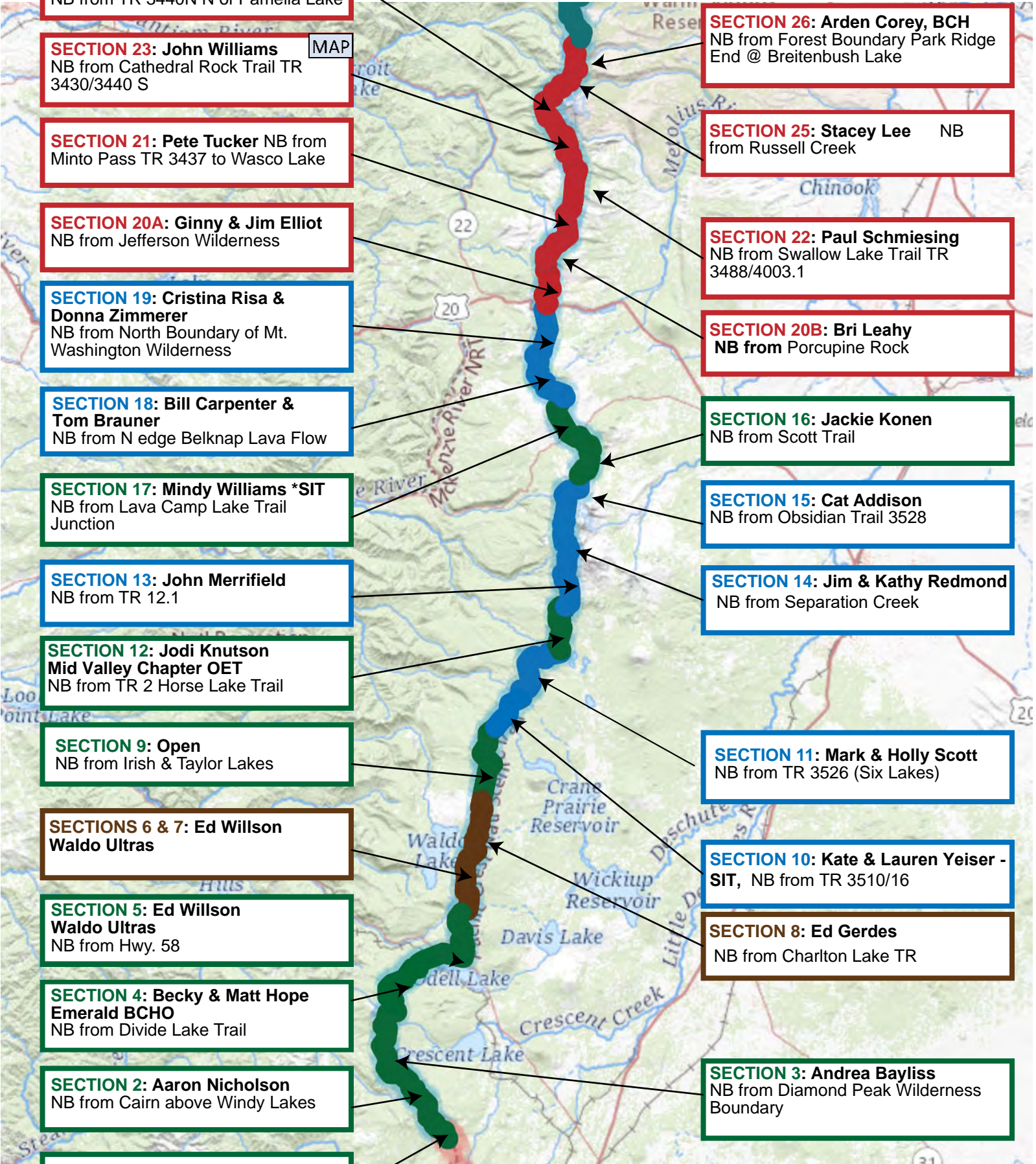
SECTION 14: Jim & Kathy Redmond
NB from Separation Creek

SECTION 11: Mark & Holly Scott
NB from TR 3526 (Six Lakes)

SECTION 10: Kate & Lauren Yeiser - SIT, NB from TR 3510/16

SECTION 8: Ed Gerdes
NB from Charlton Lake TR

SECTION 3: Andrea Bayliss
NB from Diamond Peak Wilderness Boundary



AGENCY CONTACTS

Color Code Legend

DESCHUTES NATIONAL FOREST

All Ranger Districts Contacts:
Jessica Larson, jessica.larson@usda.gov
(541) 419-7943
Justin Ewer, justin.ewer@usda.gov
(509) 395-3390
Joe Welke, joseph.welke@usda.gov
(541) 383-4040
Jason Fisher, jason.r.fisher@usda.gov
541-480-6423

MIDDLE FORK RANGER DISTRICT

Willamette National Forest
Contact:
Kevin Rowell
(541) 782-5305 kevin.a.rowell@usda.gov

MCKENZIE RIVER RANGER DISTRICT

Contact:
Dylan McCoy
dylan.mccoy@usda.gov
(541) 822-7239

DETROIT RANGER DISTRICT

Willamette National Forest
Contacts:
Brandon Haraughty (503) 983-1507
brandon.haraughty@usda.gov
Eric Gjonnes (503) 854-3894
eric.gjonnes@usda.gov